

RESTRAINT

1. OPEN CAMERA APP
2. FOCUS ON QR CODE
3. TAP BANNER TO WATCH VIDEO



CONSIDERATIONS:

- SAFETY, FATIGUE AND PHYSICAL WELL-BEING OF PERSONNEL.
- RELEASE ANIMAL WHEN UNCOOPERATIVE.

- FOR SAFETY, BE AWARE OF PEN SURROUNDINGS FOR HAZARDS AND CURIOUS ANIMALS WHEN COLLECTING SAMPLES.
- USE PERSONAL PROTECTIVE EQUIPMENT.

PIGLET BLEEDING RESTRAINT INSTRUCTIONS:

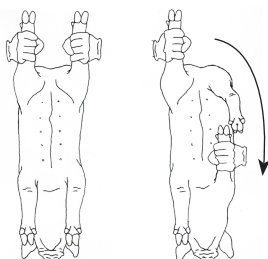
STEP 1.

GRASP UPPER BACK LEG, ABOVE HOCK. FOR BIGGER PIGLETS, PLACE OTHER HAND UNDER ANIMAL'S BELLY.



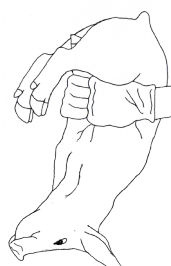
STEP 2.

LIFT PIGLET UP TO REST ON YOUR CHEST. USE OTHER HAND TO GRAB OPPOSITE FRONT LEG OF PIGLET.



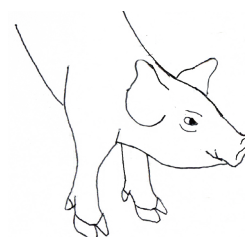
STEP 3.

SWITCH GRIP FROM BACK LEG TO SECOND FRONT LEG. COLLECT SAMPLE.



STEP 4.

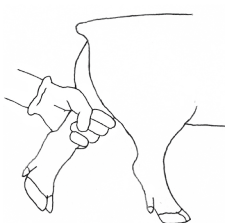
ENSURE 2 POINTS OF CONTACT BEFORE RELEASE.



PIGLET RESTRAINT INSTRUCTIONS:

STEP 1.

GRASP UPPER BACK LEG, ABOVE HOCK.



STEP 2.

PLACE OTHER HAND UNDER ANIMAL'S BELLY AND LIFT TO YOUR CHEST.



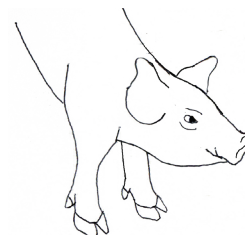
STEP 3.

CONTINUE HOLDING ANIMAL UNDER THE BELLY AND WRAP OTHER ARM AROUND PIG'S NECK. COLLECT SAMPLE.



STEP 4.

ENSURE 2 POINTS OF CONTACT BEFORE RELEASE.



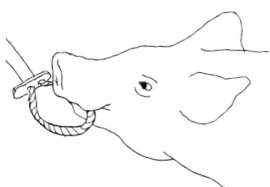
FINISHER OR ADULT RESTRAINT INSTRUCTIONS:

SUPPLIES:

- SNARE (LONG OR SHORT HANDLE)

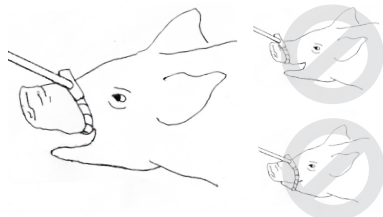
STEP 1.

STICK END OF SNARE OUT, ALLOWING PIG TO CHEW.



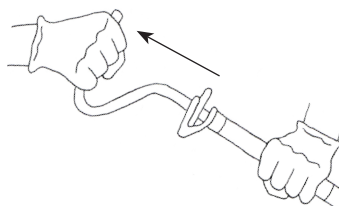
STEP 2.

ENSURE SNARE IS AS FAR BACK ON THE SNOUT AS POSSIBLE AND NOT AROUND BOTTOM JAW.



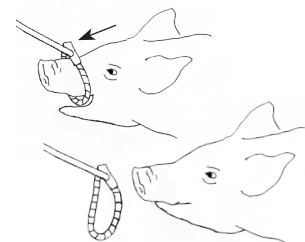
STEP 3.

WHEN READY, PULL SNARE HANDLE BACK TO TIGHTEN LOOP AROUND PIG'S SNOUT. COLLECT SAMPLE.



STEP 4.

RELEASE THE SNARE AND FREE THE ANIMAL.



COLLABORATORS:

These materials were developed through a collaborative process between Swine Medicine Education Center, Center of Food Security and Public Health, American Association of Swine Veterinarians, National Pork Board, Multistate Partnership for Security in Agriculture and United States Department of Agriculture.

FUNDING:

This project is funded by USDA's Animal and Plant Health Inspection Service through the National Animal Disease Preparedness and Response Program

ILLUSTRATIONS:

Mary Breuer
Swine Medicine Education Center
Iowa State University